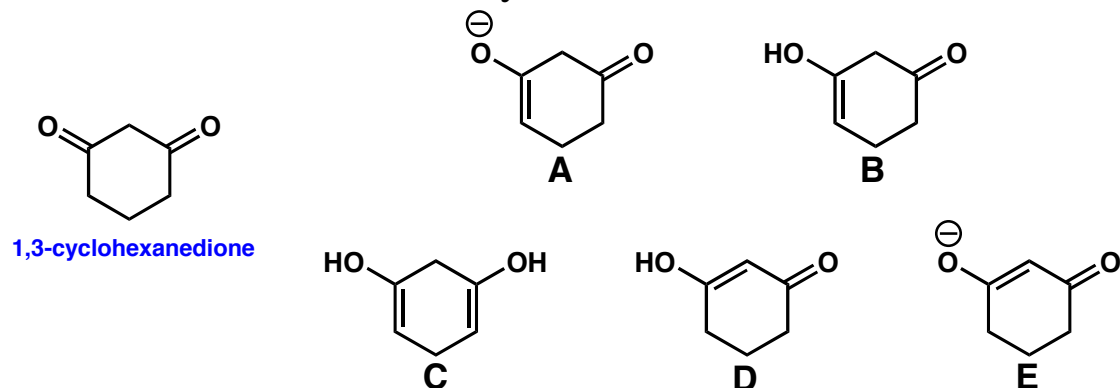


Discussion Problems

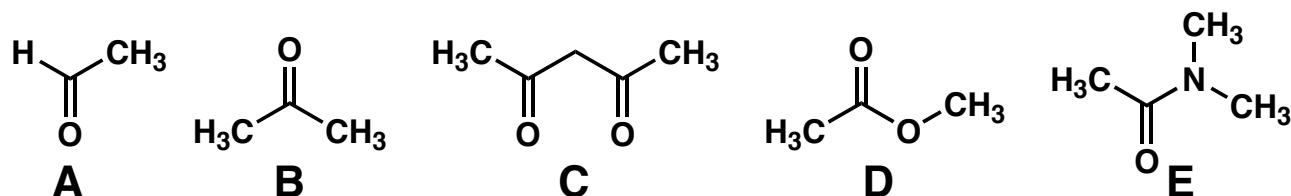
(1) Which of the following is the most stable enol of 1,3-cyclohexanedione?

- A
- B
- C
- D
- E



(2) Which of the following compounds has the most stable enol tautomer?

- A
- B
- C
- D
- E



(3) Which of the labeled hydrogen atoms in the following structure is the most acidic?

- 1
- 2
- 3
- 4
- 5

